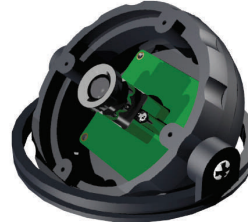


Compact, Discreet Interior Dome

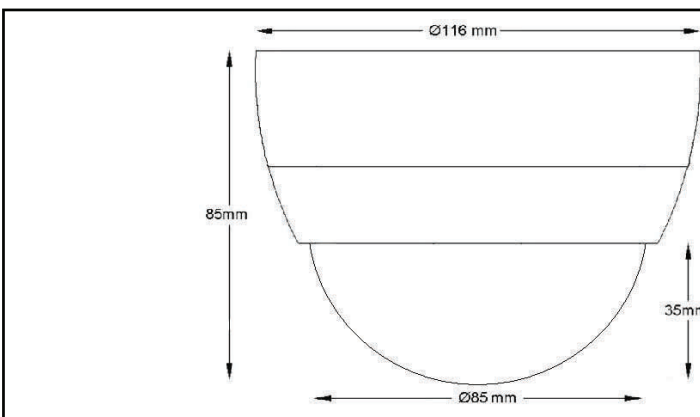
- Compact dome camera for discreet, internal locations
- Standard and High Resolution Colour Camera models
- True Day / Night models offering low-light capability and excellent response to Infra-Red



Sensor	Interline CCD	Connections	Integrated Y-cable with plug connectors.
Exposure Control	Electronic	Power	Power to the camera is supplied via the red (12VDC+) and black (0VDC) cables. (24VAC versions are not polarity-sensitive).
Voltage	12V DC	Video	The video output lead is fitted with a Female BNC connector. for easy connection to a co-axial, or other, video cable. Center pin is for signal. Sleeve is ground.
AGC	Always on		It is recommended that Co-axial (RG59) cable or a dedicated video multi-core cable is used to link the camera to further equipment.
Video Signal	Composite into 75Ω		The signal output is a standard PAL composite 1v p~p video signal.
Operating Temp.	-10 °C to +50 °C		
Relative Humidity	85% Max. non-condensing		
Housing	Internal use only		

Mode	Sensor	Res	Sensitivity Lux (f.1.2)	Power	Dimensions mm	ORDER CODE
Colour	1/3" PAL	380 TVL	0.15 Lux	80mA	Ø116 x 85 Varifocal	D11-CV
Colour	1/3" PAL	380 TVL	0.15 Lux	80mA	Ø116 x 85 Auto-Iris, Varifocal	D11-CVAI
Colour	1/3" PAL	520 TVL	0.1 Lux	80mA	Ø116 x 85 High Res, Fixed Lens	D11-CH
Colour	1/3" PAL	520 TVL	0.1 Lux	80mA@12v/70mA@24v	Ø116 x 85 High Res, Fixed Lens	D11-CH-12/24
Colour	1/3" PAL	520 TVL	0.4 Lux	160mA	Ø116 x 85 Wide Dynamic Range	D11-CHWDR
Colour	1/3" PAL	520 TVL	0.1 Lux	80mA	Ø116 x 85 Auto-Iris, Varifocal	D11-CHVAI
Colour	1/3" PAL	520 TVL	0.1 Lux	80mA	Ø116 x 85 Auto-Iris, VF, OSD*	D11-CHVAIO
Colour	1/3" PAL	520 TVL	0.4 Lux	160mA	Ø116 x 85 Auto-Iris, VF, WDR	D11-CHVAI-WDR
Colour	1/3" PAL	550TVL	0.3 Lux	140mA	Ø116 x 85 Auto-Iris, VF, HI-RES	D11-CHHVAI
Colour	1/3" PAL	520TVL	0.1 Lux	80mA@12v/70mA@24v	Ø116 x 85 Auto-Iris, Varifocal	D11-CHVAI-12/24
Day/Night	1/3" PAL	520/570	0.1/0.01 Lux	160mA	Ø116 x 85 Auto-Iris, Varifocal, TDN	D11-CHVAIT
Day/Night	1/3" PAL	520 TVL	0.1/0.01 Lux	160mA	Ø116 x 85 Auto-Iris, VF, TDN,OSD*	D11-CHVAITO
Day/Night	1/3" PAL	520/570	0.4/0.03 Lux	175mA	Ø116 x 85 Auto-Iris, VF, WDR, TDN	D11-CHVAIT-WDR

NB. D11-CH(VAI)-12/24 self-adjusts to the input voltage options of 12vDC or 24VAC.
 * See included OSD manual for full details.



Lenses

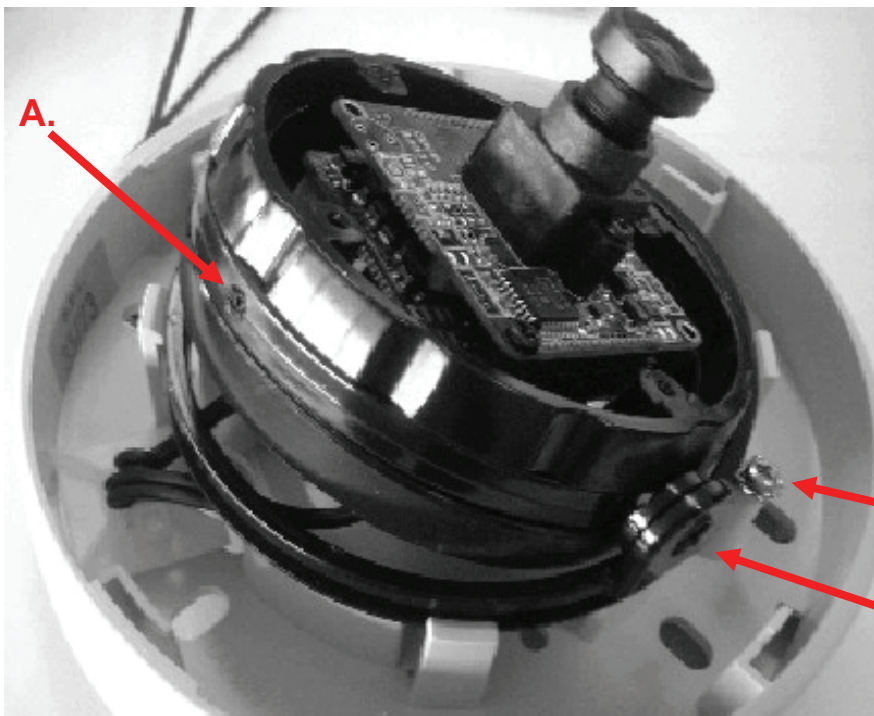
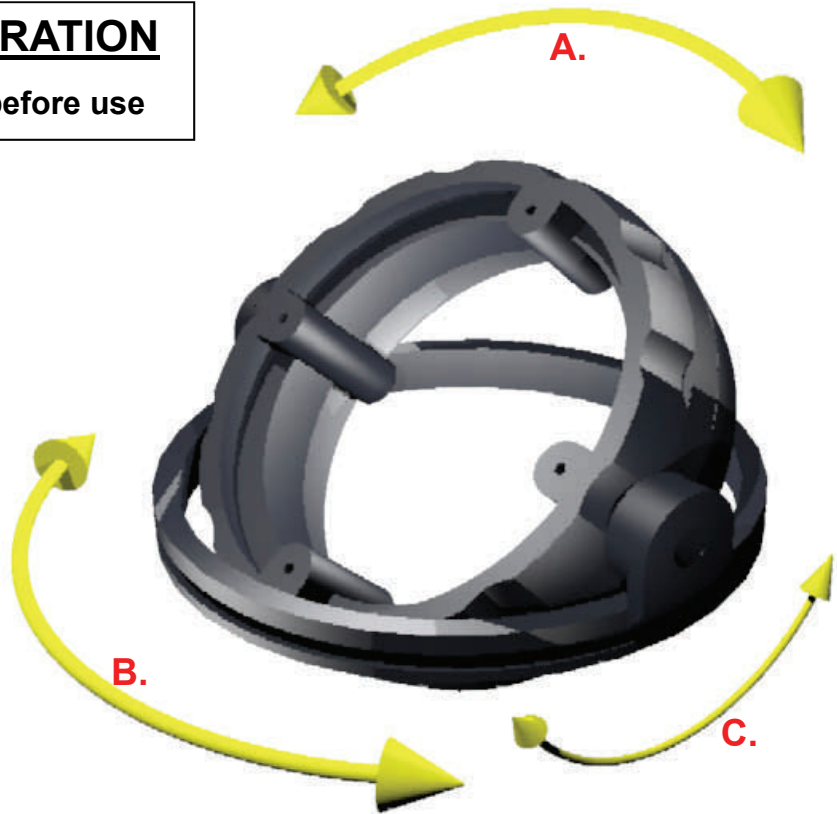
Standard lens fit is a 3.6 mm type.
 Alternative lenses are optional: 6.0, 8.0, 12.0 mm

Variable focal models are fitted with a 4.0 - 9.0 mm sweep lens.

To order an alternative :
 Add an oblique stroke and the required lens value to the end of the order code.
 E.g. 6 mm lens: **D11-CH /6.0**

3-AXIS GIMBLE OPERATION

Read this guide carefully before use



- A.** These grub screws control the rotation of the inner turn-table and 'picture top'.
- B.** This screw controls the rotation of the whole assembly.
- C.** This screw controls pan and/or tilt, according to the vertical or horizontal mounting surface.

